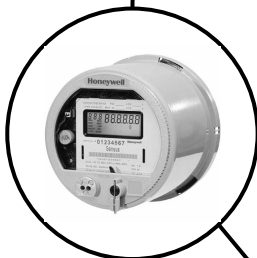




Complete range of wireless 'add-on' nodes for pulse, 4-20mA, 0-10V, relays, M-Bus and Modbus (ZPC, ACT, ZIO, ZVO, ZMB)



Monitor main incoming electricity meters remotely



Remote Site or Asset

Front Panel

Let users arm and disarm the system locally and remove a site from a dispatch event, with clear LED indicators showing the current status

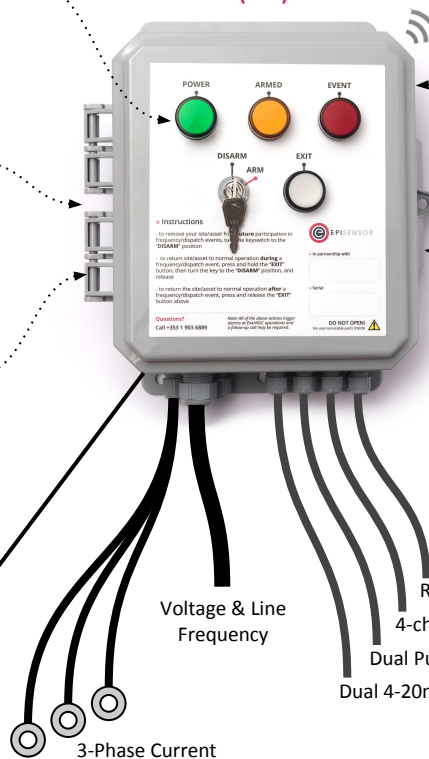
Fully Secure

Security from 'sensor to server' with ZigBee AES 128-bit encrypted communications

IP67 (NEMA 4) Enclosure

Water and dust-proof polycarbonate enclosures as standard

Frequency and Demand Response (ZDR)



Live Stream

Send data to the server every second, or 'only when a change is detected' with delta reporting mode

80ms Reaction Time

Use the 4x on-board Form C relays to switch load or move sites to backup generation within 80 milliseconds of an under-frequency event

Expand Easily

Add any other EpiSensor nodes for monitoring 4-20mA, 0-10V, Modbus, etc.

EpiSensor Gateway (NGR-30-5)

Based on Dell Edge Gateway 3002



to local systems via:

- Modbus TCP
- REST API
- OPC UA
- other protocols using EdgeX Foundry

Network

Onboard 3G / 4G cellular, Wi-Fi and dual Ethernet (with PoE) for wide area network connectivity.

to private / public cloud